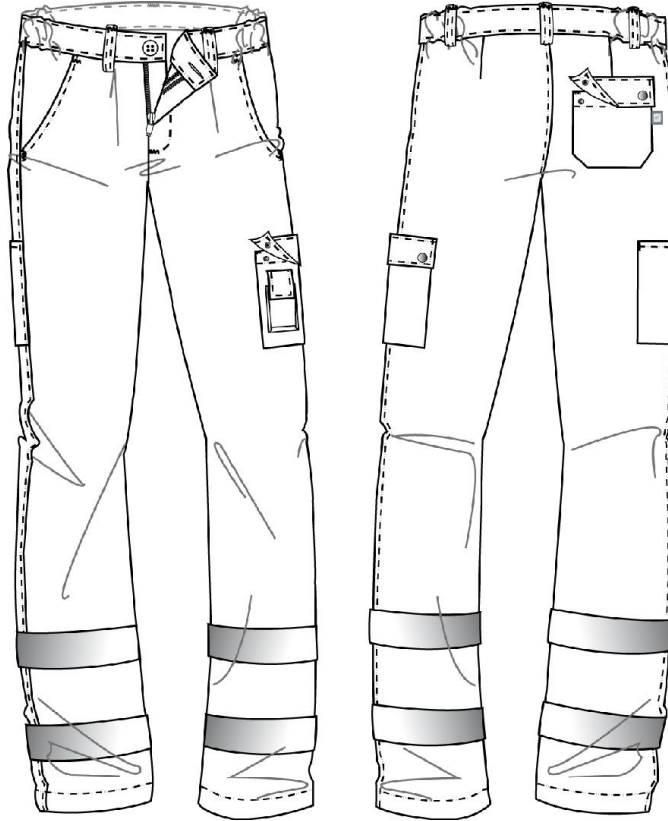




DESCRIPTION <b>TROUSERS MAN</b>		FABRIC <b>FABRIC COTTON 60% POLYESTER 40%</b>		
VARYNG <b>ALTA VISIBILITA'</b>				
SEASON <b>000 CONTINUOUS</b>	BRAND <b>SH SIGGI HIGH-TECH</b>	THEME <b>00 GENERIC</b>	GENDER <b>M MAN</b>	
LINE <b>25 DPI SIGGI</b>	SIZE RANGE <b>XS - 5XL</b>	BASE SIZE <b>L</b>	SAMPLE RIPETITION <b>0</b>	



**Product description**

**FABRIC COTTON 60% POLYESTER 40% 260GR/MQ**

MAN TROUSERS WITH INFRONT OPENING CLOSED BY ZIPPER AND BY BUTTON WITH RELATIVE BUTTONHOLE ON THE BELT.  
 WAIST BELT WITH ELASTIC BAND ON THE SIDES AND LOOPS.  
 INFRONT POCKETS, RIGHT BACK POCKET AND LEFT SIDE POCKET ARE COVERED BY FLAPS CLOSED BY SNAP BUTTONS.  
 PHONE-POCKET IS APPLIED ON THE LEFT SIDE POCKET CLOSED BY VELCRO.  
 METER-POCKET ON THE RIGHT BACK LATERAL SIDE.  
 PLEATS ON THE INFRONT AND DARTS ON THE BACK.  
 REFRACTIVE BAND ON THE BOTTOM LEGS.  
 THE PIECE PRESENTS BAR-TACKS ON THE POINTS OF MAJOR EFFORTS.

REV.2 OF THE 20/10/2011 WASHING SYMBOL  
 REV.3 OF THE 17/04/2012 ADDED THE "LOTTO" LABEL.  
 REV.4 OF THE 20/02/2013 RESTYLING

<b>Working Process:</b>									
<b>Certification:</b>									

UNI EN 471